



Elevate® Maintenance Powder

Natural Vitamin E Powder

Maintains optimal vitamin E levels that support healthy muscle, nerve and immune functions.

Vitamin E cannot be synthesized by the horse; therefore, it is considered an essential nutrient. Requirements vary from situation to situation, but every horse needs adequate levels of vitamin E to remain healthy and perform at optimal levels. The natural vitamin E in Elevate is preferentially absorbed and utilized in the tissues.

Elevate vitamin E outperforms synthetic counterparts.

Common Sources of Vitamin E	Biopotency
d-alpha-tocopherol (natural, Elevate W.S.)	1.49
d-alpha-tocopheryl acetate (natural, Elevate Maintenance Powder)	1.36
dl-alpha-tocopherol (synthetic)	1.10
dl-alpha-tocopheryl acetate (synthetic)	1.00

Available Sizes:

- **2 lb** (0.91 kg) jar (contains 130 scoops)
- **10 lb** (4.54 kg) bucket (contains 647 scoops)

Ingredients:

D-alpha-tocopheryl acetate (natural vitamin E), and dextrose.

Guaranteed Analysis:

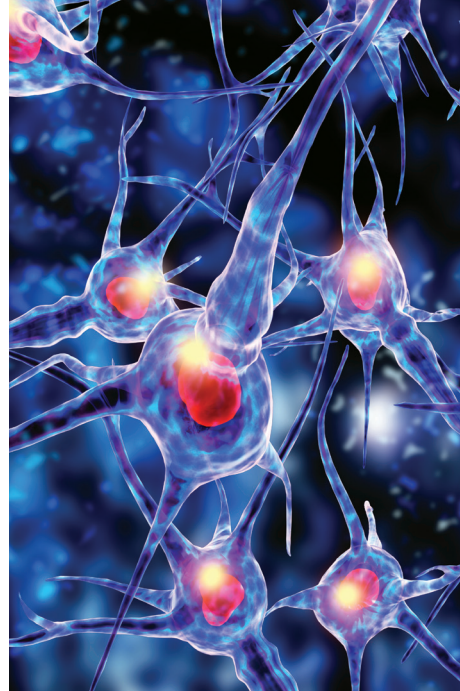
	Per 7 g
Vitamin E (Min.)	1,000 IU

Elevate® Maintenance Powder is easy to feed and retains its potency in a variety of environmental conditions.



Supplementation is recommended to support horses in the following situations when:

- Vitamin E levels are deficient.
- Consuming a diet limited in fresh green pasture or those grazing on winter pasture.
- Maintained on dried forages, including overweight horses, laminitic horses, insulin-resistant or metabolically challenged horses.
- In intense training, or competition.
- Aging horses that need additional antioxidant support.
- During short-distance trailering or long-distance shipping.



Feeding Recommendations

1 scoop = 1,000 IU of vitamin E

Mix in feed.

- Maintenance: 1-2 scoops per day (1,000-2,000 IU vitamin E per day)
- Intense training: 3-5 scoops per day (3,000-5,000 IU vitamin E per day)
- Pregnant/lactating mares: 3 scoops per day (3,000 IU vitamin E per day)
- Foals: 3 scoops per day (3,000 IU vitamin E per day)
- Stallions: 3 scoops per day (3,000 IU vitamin E per day)



Consult with your veterinarian to determine the level of supplementation needed to support a return to normal function in cases of neurological disease, muscle myopathy, or a compromised immune response.

Slower acting than Elevate W.S., Elevate Maintenance Powder starts to increase blood plasma levels in 3 weeks and typically peaks after 7 to 8 weeks.



Vitamin E is an essential nutrient. Learn more.



Making the transition from Elevate W.S. to Elevate Maintenance Powder.

When switching from Elevate W.S. liquid to Elevate Maintenance Powder, we recommend transitioning over a period of 21 days (3 weeks) to reduce the risk of an unwanted drop in vitamin E blood levels.

To transition, slowly taper off the amount of Elevate W.S. fed while adding in an equal amount of Elevate Maintenance Powder.